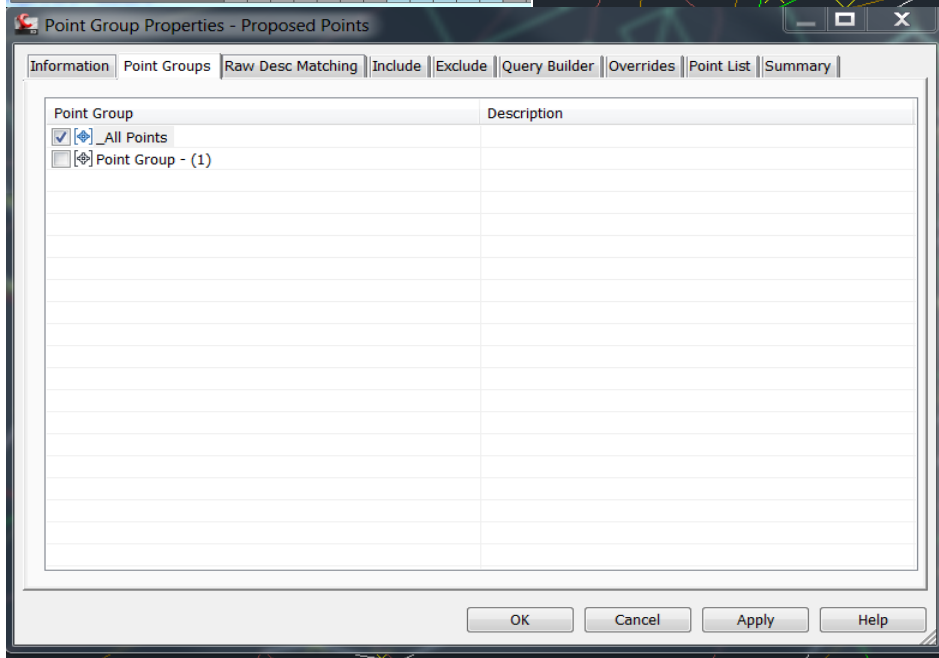
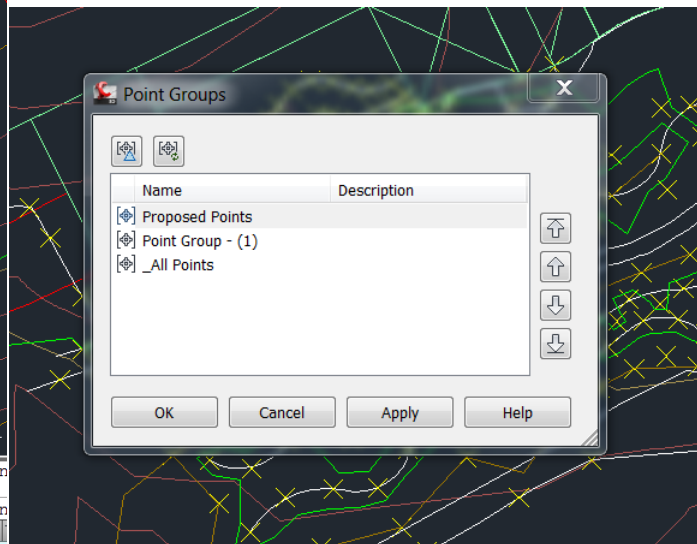
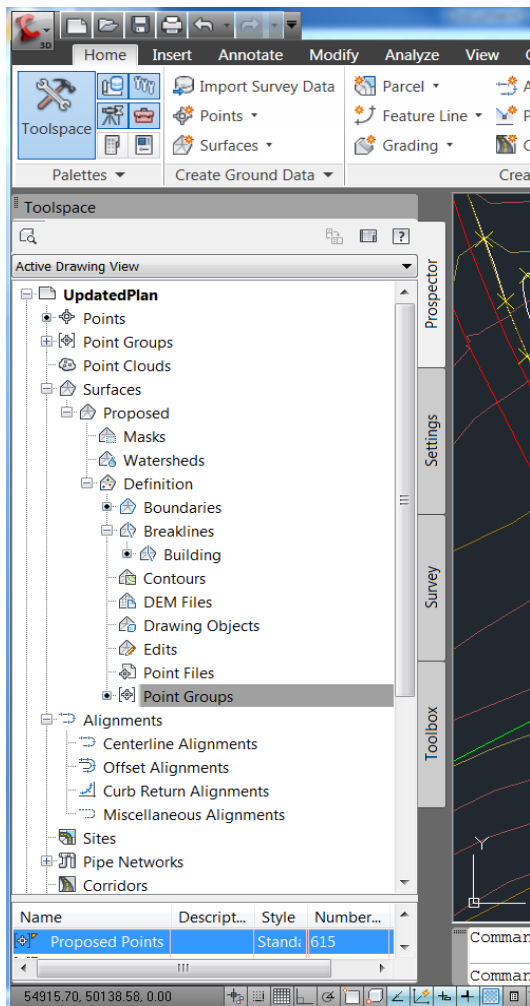


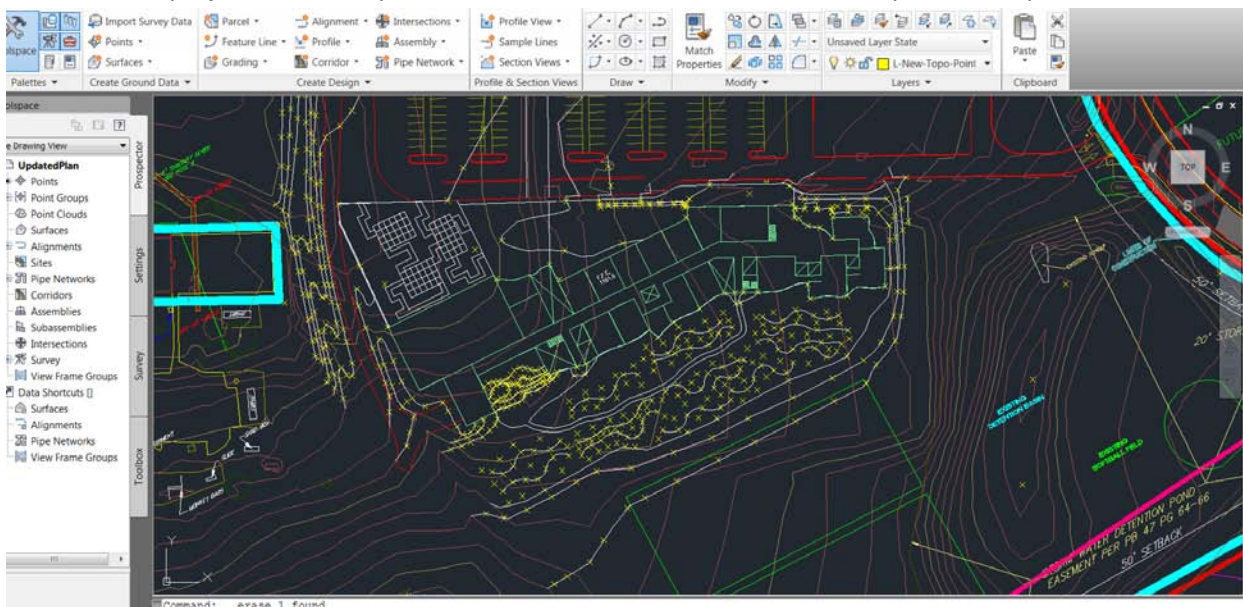
Creating a surface using point groups in Civil 3D.

To add points, go to the home tab -> points -> Miscellaneous -> Manual. Then a dialog box will appear. Choose the button in the most upper left of the box; this is add point. Click to the location you want to place the point. Hit enter, then type the elevation of the spot.

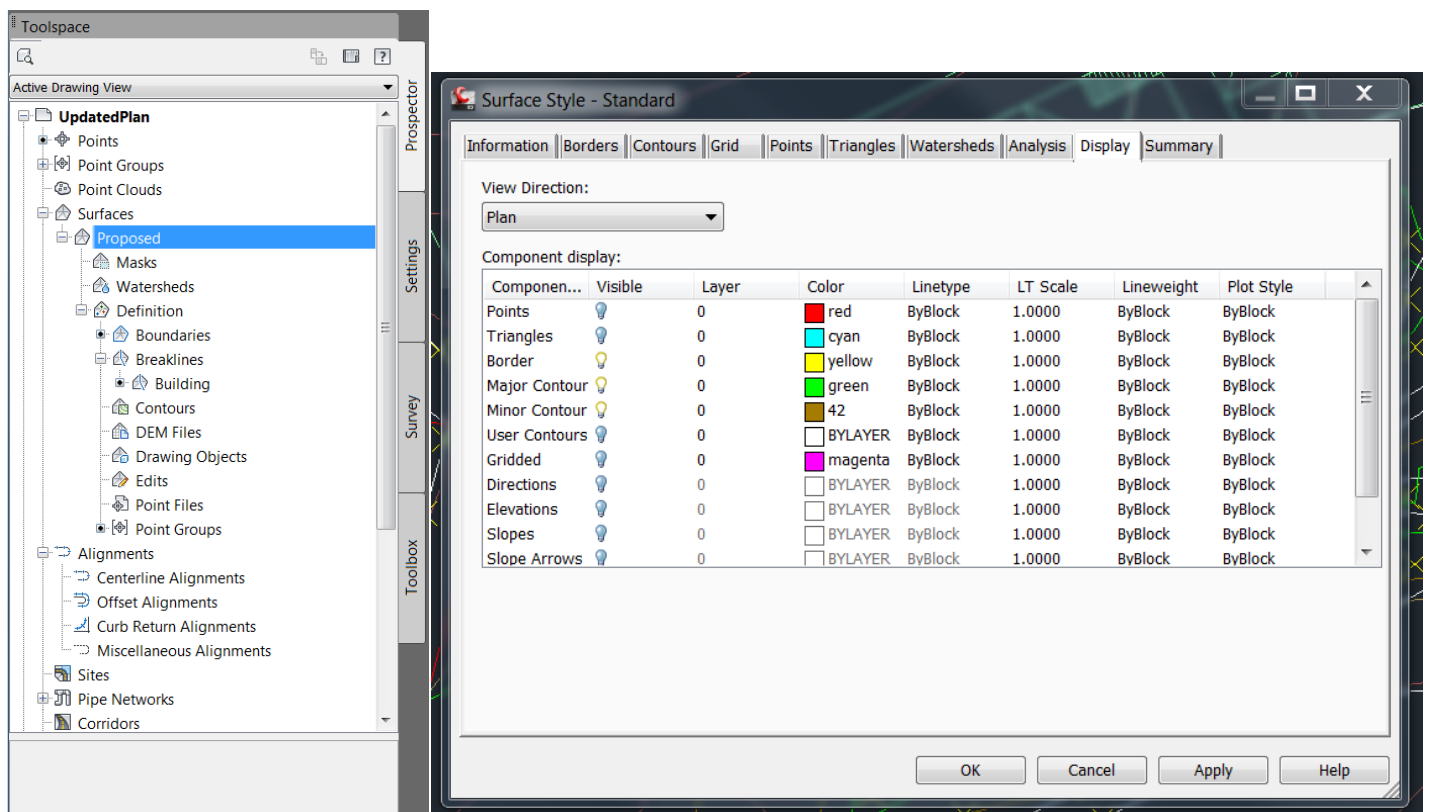
Next, place all of your points into a point group. Right click on "point groups" (Image below on the left.) Then hit add and a dialog box will appear where you will add your own point group. Double click that group, "proposed points" in this case (Image below right.) In the third image below, check the box for add all points. Then hit ok.



This is what a project with the spot elevations added would look like. The spots are in yellow.



Once you have added all your points to a point group, you can then create a surface. Simply right click on “surfaces” and then click “create surface.” After a few seconds, a boundary line will appear in your workspace. To view the new topography lines, right click on the name of your surface (see image below left.) Then select edit surface style and turn on major and minor contours. Hit apply and then ok. (See image below right.)



The topography created from the spot elevations is shown as the green lines as the major contours and the brown lines as the 1 foot contours.

